

---

# THE FRAUNHOFER-GESELLSCHAFT

---



# Joseph von Fraunhofer (1787 – 1826)



© Deutsches Museum

## Researcher

- Discovery of the “Fraunhofer lines” in the solar spectrum

## Inventor

- New methods for processing lenses

## Entrepreneur

- Director and partner in a glassworks



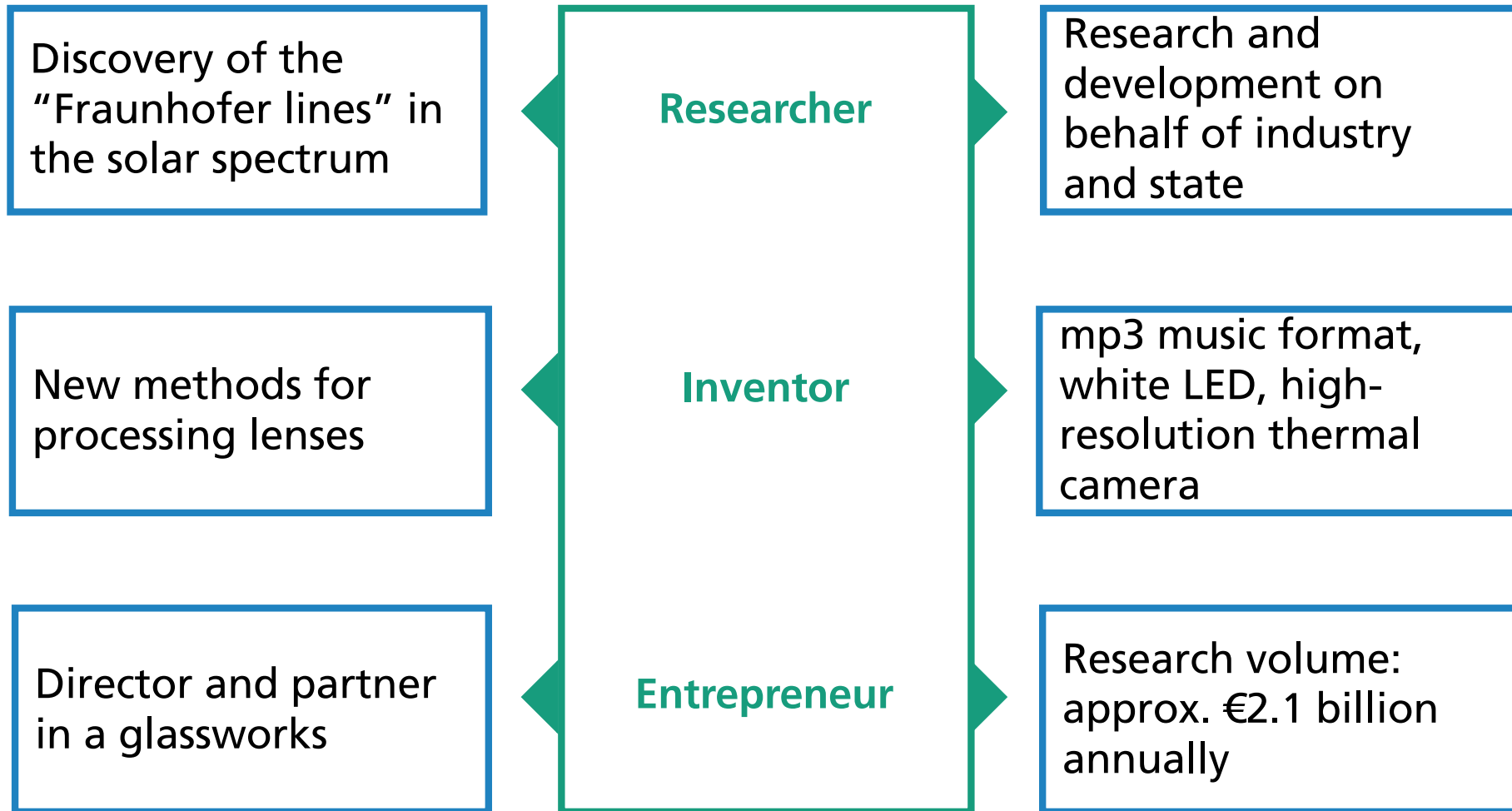
© Fraunhofer-Gesellschaft



**Joseph von  
Fraunhofer**



**The Fraunhofer-  
Gesellschaft**



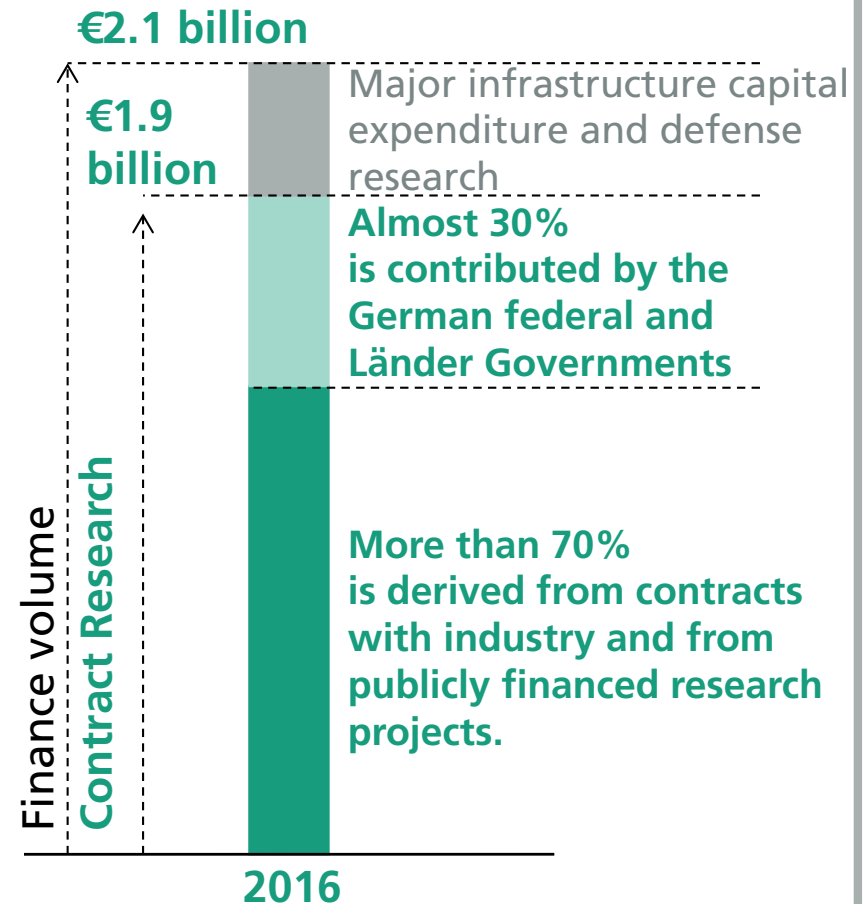
# The Fraunhofer-Gesellschaft at a Glance

The Fraunhofer-Gesellschaft undertakes applied research of direct utility to private and public enterprise and of wide benefit to society.

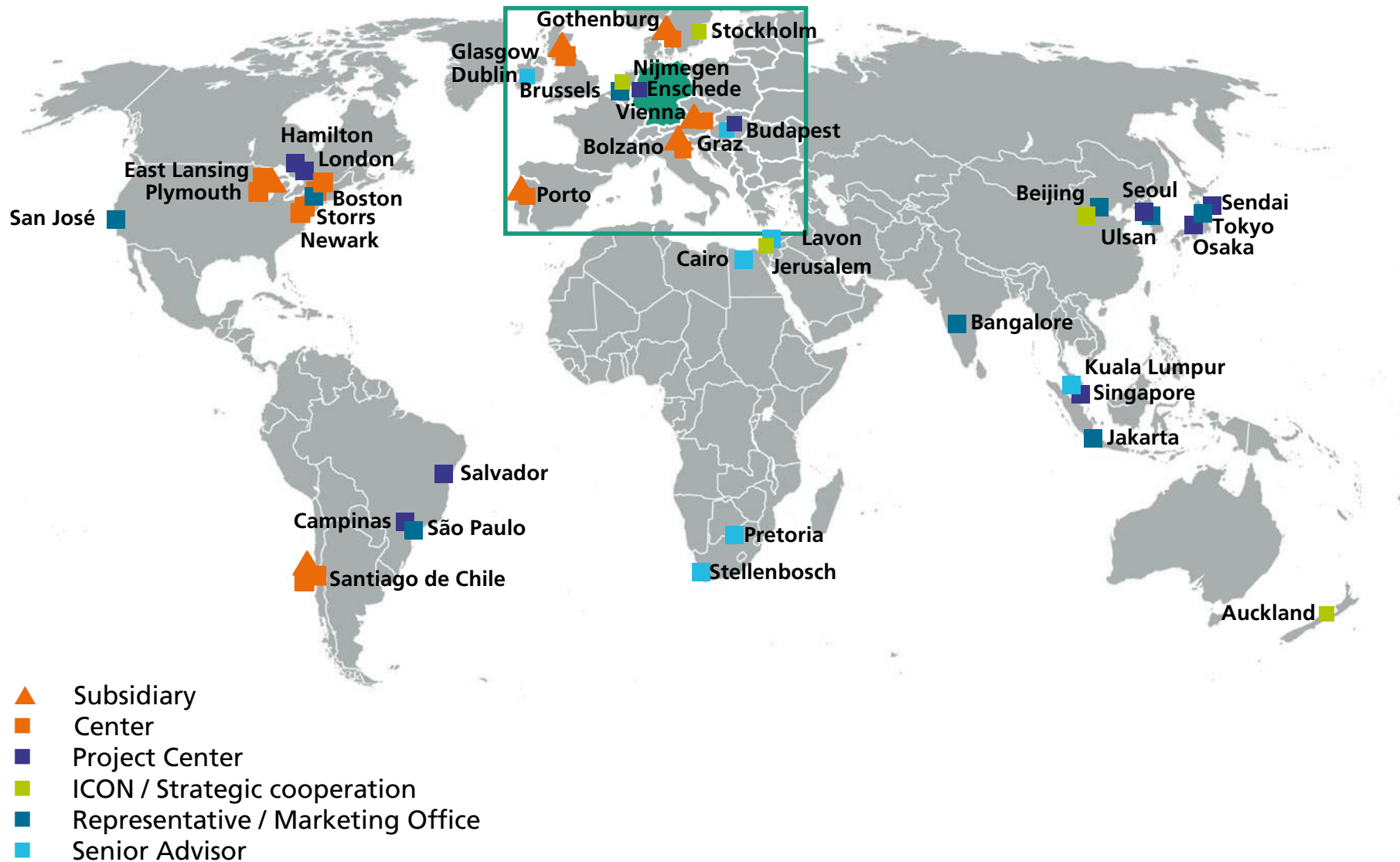
  
**24,500** staff



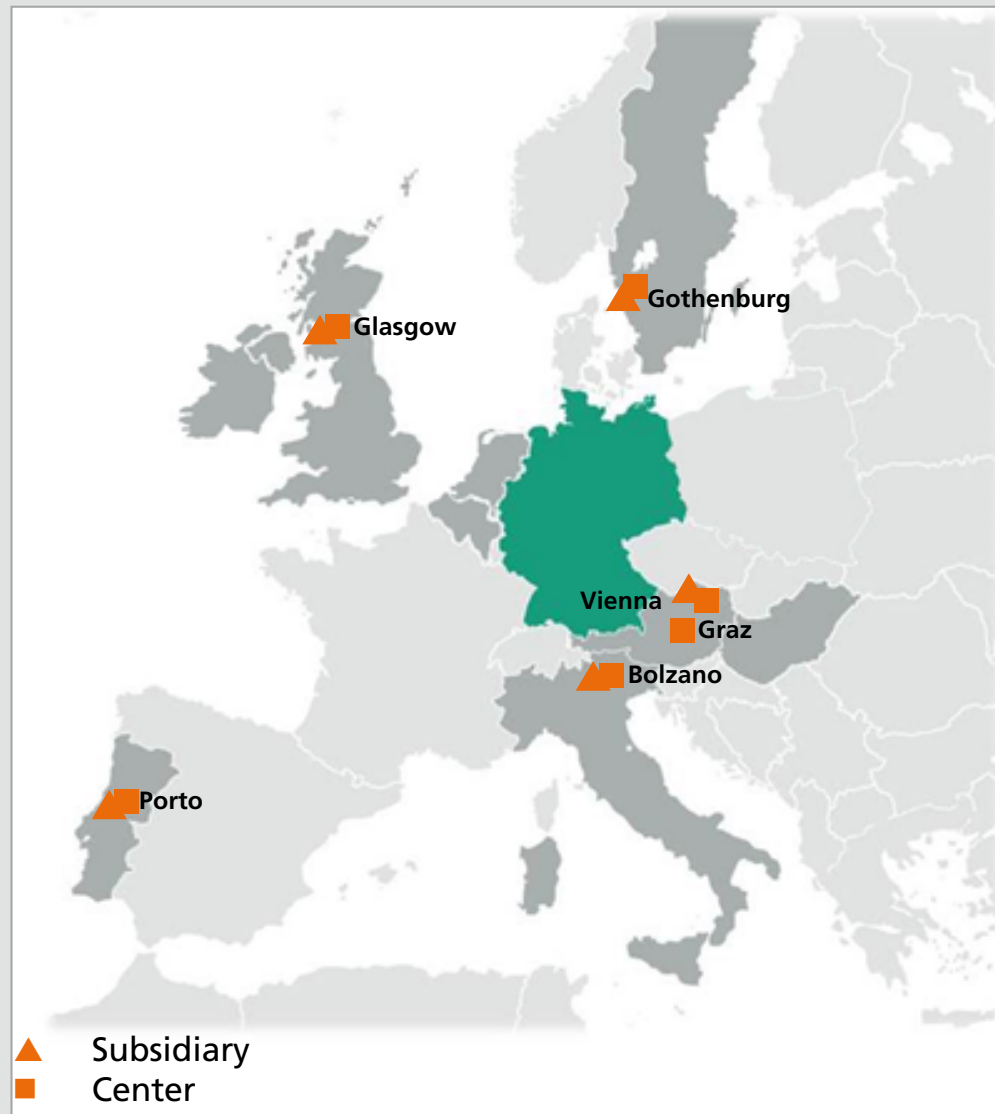
**69** institutes and research units



# Fraunhofer Worldwide



# Fraunhofer Subsidiarys and Center in Europe



## Fraunhofer Austria Research

- Production and Logistics Management Division, Vienna
- Visual Computing Division, Graz

## Fraunhofer Italia Research

- Fraunhofer Innovation Engineering Center IEC, Bolzano

## Fraunhofer Portugal Research

- Fraunhofer Center for Assistive Information and Communication Solutions AICOS, Porto

## Fraunhofer Chalmers Centrum

- Fraunhofer Chalmers Research Center for Industrial Mathematics FCC, Gothenburg

## Fraunhofer GB Research

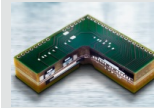
- Fraunhofer Centre for Applied Photonics CAP, Glasgow

# Fraunhofer Groups



## Innovation Research

IAO, ISI, INT, IMW



## Microelectronics

EMFT, ENAS, FHR, HHI, IAF, IIS, IISB, IMS, IPMS, ISIT, IZM  
Gäste: AISEC, ESK, FOKUS, IDMT, IKTS, IMWS, IZFP



## Information and Communication Technology

AISEC, ESK, FIT, FKIE, FOKUS, IAIS, IDMT, IESE, IGD, IOSB, ISST, ITWM, IVI, MEVIS, SCAI, SIT  
Gäste: HHI, IIS, IAO



## Production

IEM, IFF, IML, IPA, IPK, IPT, IWU, UMSICHT  
Gast: IMW



## Life Sciences

EMB, IBMT, IGB, IME, ITEM, IVV, IZI



## Defense and Security VVS

EMI, FHR, FKIE, IAF, ICT, INT, IOSB  
Gäste: HHI, IIS, ISI



## Light & Surfaces

FEP, ILT, IOF, IPM, IST, IWS



## Materials and Components – MATERIALS

EMI, IAP, IBP, ICT, IFAM, IKTS, IMWS, ISC, ISE, IWES, IWM, IZFP, LBF, WKI  
Gäste: IGB, ITWM, ISI

# Growth in inventions and patents

2012 – 2016

	2012	2013	2014	2015	2016
Active patent families at year end*	6103	6407	6625	6573	6762
Invention disclosures reports per year	696	733	736	670	798
Patent applications per year	499	603	563	506	608

\* Portfolio of active rights (patents and utility models) and patent applications at year end.